

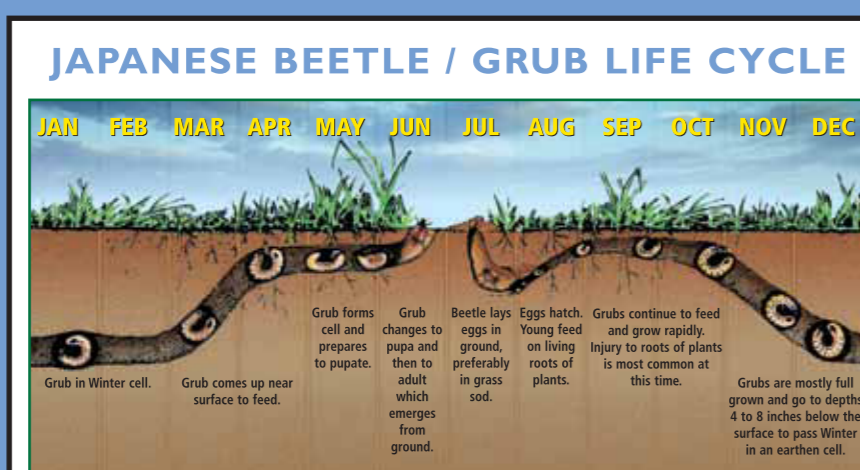
38"

1.25" SEAL

10 YEAR GUARANTEE WHEN APPLIED AS DIRECTED

St. Gabriel ORGANICS SINCE 1973

St. Gabriel ORGANICS SINCE 1973



SPREADER SETTINGS table listing various spreader models and their corresponding application rates for Milky Spore Granular.

Use of this material works best when dispersed on lawn areas using a Drop Spreader. Only 4 applications: Spring, Summer & Fall for 2 years.

INOCULATION BY DROP SPREADER: For lawns and other grassy areas around homes, spread MILKY SPORE GRANULAR evenly over the treatment area with a drop spreader at the rate of 1 lb per 350 sq ft or 30 lbs per 7,000 sq ft.

- Fill the drop spreader with MILKY SPORE GRANULAR.
Apply uniformly over the treatment area with the spreader settings specified in the table below.
Water the treated turf lightly after application to soak spores into the soil.

PRECAUTIONARY STATEMENTS: Hazards to Humans and Domestic Animals: CAUTION: Harmful if inhaled or absorbed through skin. Causes moderate eye irritation. Avoid breathing dust. Avoid contact with skin, eyes or clothing. Wash thoroughly with soap and water after handling and before eating, drinking, chewing gum, using tobacco or using the toilet. Remove and wash contaminated clothing before reuse.

FIRST AID:

IF INHALED: Move person to fresh air. If person is not breathing, call 911 or an ambulance, then give artificial respiration, preferably by mouth-to-mouth, if possible. Call a poison control center or doctor for further treatment advice.

IF ON SKIN OR CLOTHING: Take off contaminated clothing. Rinse skin immediately with plenty of water for 15-20 minutes. Call a poison control center or doctor for treatment advice.

IF IN EYES: Hold eye open and rinse slowly and gently with water for 15-20 minutes. Remove contact lenses, if present, after the first 5 minutes, then continue rinsing eye. Call a poison control center or doctor for treatment advice.

Hot-Line Number 800-801-0061: Have the product container or label with you when calling a poison control center or doctor or going for treatment. For emergency information or questions, call 1-800-801-0061, Monday through Friday 9am to 5pm Eastern time. During other times call your poison control center at 1-800-222-1232.

Milky Spore GRANULAR GRUB CONTROL

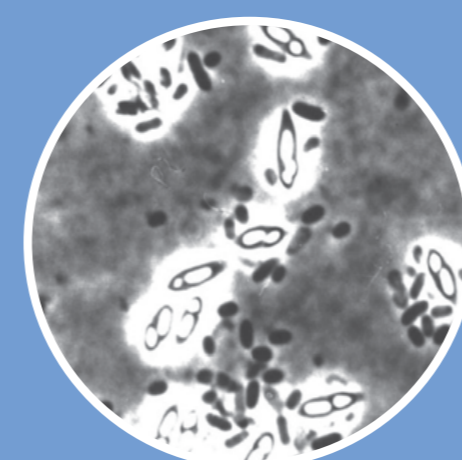
Milky Spore GRANULAR GRUB CONTROL



Adult Beetle



Healthy Grub



Magnified Spores



Grub infected with Milky Spore

JAPANESE BEETLE PREVENTION

READY TO USE: Rid your lawn of unsightly brown spots that may be caused by grub damage. Control Japanese Beetle grubs in the soil. Use on grass, in gardens and mulch beds.

To achieve best grub control, apply Milky Spore Spring, Summer and Fall for two years to achieve maximum build up of spores in the soil.

10 YEAR GUARANTEE WHEN APPLIED AS DIRECTED

Milky spore can be applied any time the ground is not frozen. Once established, milky spore may remain viable for many years.

ACTIVE INGREDIENT: Spores of Bacillus popilliae 0.0006%
OTHER INGREDIENTS: 99.9994%
TOTAL: 100.0000%

TREATS 7,000 SQUARE FEET

NET WEIGHT 20 LBS (9.12 KG)

CAUTION:

Keep Out of Reach of Children. See Precautionary Statements on back panel.

EPA Est. no. 63191-VA-1
EPA Reg. no. 63191-16

Milky Spore • GRANULAR • GRUB CONTROL

QUICK FACTS: KILLS: Japanese Beetle Grubs. COVERAGE: This bag covers up to 7,000 sq. ft. WHERE TO USE: Lawns, Flower Beds, Ground Covers, Vegetable Gardens, and around Trees & Shrubs. WHEN TO USE: Milky Spore Granular is a 2-year program. Apply Spring, Summer, & Fall for 2 consecutive years. HOW MUCH TO USE: See spreader settings. HOW TO REACH US: For questions or comments, call toll-free (800) 801-0061 or visit us on-line at www.stgabrielorganics.com

DIRECTIONS FOR USE: It is a violation of Federal law to use this product in a manner inconsistent with its labeling.

FOR USE ON LAWNS AND OTHER GRASSY AREAS AROUND HOMES, ORNAMENTAL GARDENS AND FLOWER BEDS, MULCHED BEDS AND ORNAMENTAL GROUND COVERS.

To control Japanese beetle grubs in lawns, turf or other areas specified on this label, apply MILKY SPORE GRANULAR during any season of the year when the ground is not frozen and water lightly after application to soak spores into the soil.

GRUBS: Apply Spring, Summer & Fall for 2 consecutive years.

LAWNS & GARDENS, TREES & SHRUBS: How Much: See Spreader Settings.

Coverage: To be sure you cover the entire area uniformly first treat the border of the lawn then fill in the center. Make parallel passes, walking at a steady pace to ensure even distribution of the granules.

Water thoroughly after applying.

FOR BEST RESULTS: Apply early before grub hatch.

Water thoroughly within 24 hours after applying.

Do not mow until the granules are worked into the soil.

SIGNS OF GRUB DAMAGE TO LAWNS: Japanese Beetle grubs cause extensive damage to lawns by feeding on grass roots.

Grass turns yellow, then brown, and dies. Grubs chew off roots so that the grass is easily pulled up in pieces in your hands. You can roll it back like a carpet to reveal the grubs. If patches of dead grass appeared in your lawn late summer, check for grubs.

Environmental Hazards: To protect the environment, do not allow pesticides to enter or run off into storm drains, drainage ditches, gutters or surface waters. Applying this product in calm weather when heavy rain is not predicted for the next 24 hours will help to ensure that wind or rain does not blow or wash pesticide off the treatment area.

Sweeping any product that lands on a driveway, sidewalk, or street back onto treated area of lawn or garden, will help prevent run off to water bodies or drainage systems.

STORAGE DISPOSAL: Do not contaminate water, food or feed by storage or disposal.

PESTICIDE STORAGE: Store in a cool, dry place away from direct sunlight. Keep container tightly closed to protect product from moisture.

PESTICIDE DISPOSAL AND CONTAINER HANDLING: Nonrefillable container. Do not reuse or refill container.

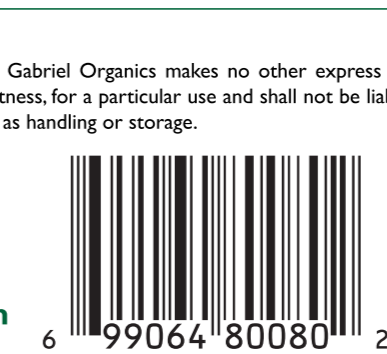
If empty: Place in trash or offer for recycling if available.

If partly filled: Call your local waste agency for disposal instructions. Never place unused product down any indoor or outdoor drain.

WARRANTY: To the extent consistent with applicable law, St. Gabriel Organics makes no other express or implied warranty, either of merchantability or fitness, for a particular use and shall not be liable for misuse or conditions beyond its control, such as handling or storage.

St. Gabriel Organics 14044 Lakeside Dr., Orange, VA 22960

1-800-801-0061 www.StGabrielOrganics.com



24.5"

1" Seal

10"

18"

10"

1" Seal

1.25" SEAL

Hitech color calibration strip with color bars and technical specifications.